

# AI in Higher Education- Maths and Stats Support Experience

Dr Luis A. Sanchez

Email: [ae2436@coventry.ac.uk](mailto:ae2436@coventry.ac.uk)



# Introduction: General Landscape

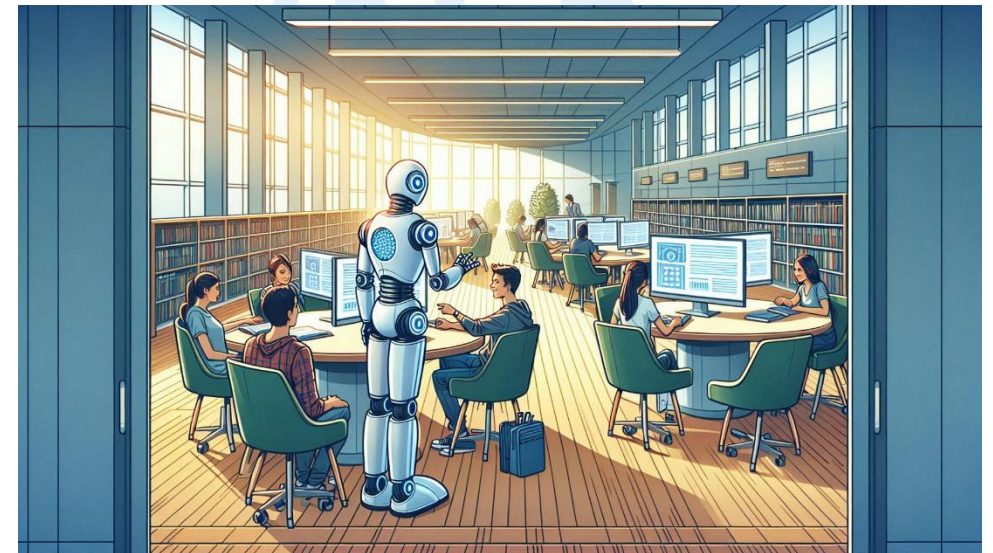
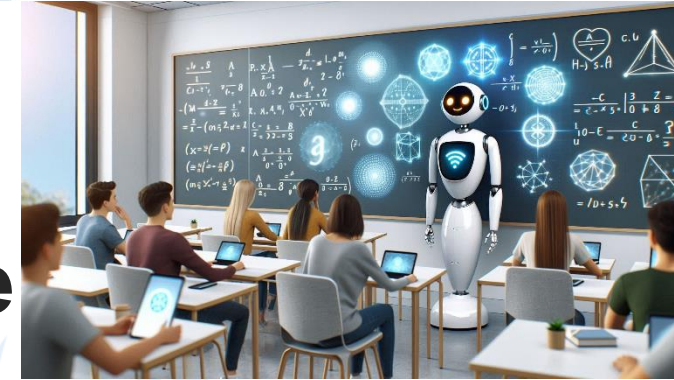
- AI is transforming the landscape of higher education, enhancing teaching and learning:  
**Personalised learning experiences.**



# Integration of AI on the Higher Education

- Discussion on its possible **integration in the classroom** and in **support services** like sigma at Coventry University and others.

- **Personalised tutoring**
- **Extra hours support**
- **AI powered research tools**





# AI in Education implementation: Closed Source vs Open Source

## Closed source models (GPTs and Agents)

- AI agents- Copilot Studio and other tools.
- Personalised chatbots: **GPTs** and **Copilots\***, soon Google “Geminis”

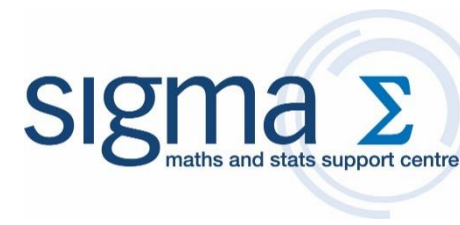


## Open-source models

- Open source: **LLAMA** and different implementations like **LLEMMMA(retrained for maths)**
- **LM studio** and similar (Running local models)
- Retraining them to be good at maths and stats.



# My own experience: Meet sigma and SPSS bot



- Live Demo



# Thanks !

